

INSTALLATION & CARE

SPEC-D
Tuning

INNOVATE PROFESSIONAL SERVICE

2004-2015 NISSAN TITAN LED TAIL LIGHT INSTALLATION INSTRUCTION

BEFORE INSTALLATION:

- If you experience any difficulties that the instructions did not cover, please seek assistance at a local automotive shop.
- Please wear proper protective equipment before you work on any vehicle.
- An assistant is recommended when removing the front bumper from your vehicle.
- Please be cautious when working with the bumper or any parts belonging to the vehicle's body to prevent scratching.
- Do not make direct contact with the halogen bulbs or the wire assembly until the unit has cooled down after use.

TOOLS AND SUPPLIES REQUIRED

1/4" Ratchet	10 mm Socket	Plastic Pry Bar	Alcohol Pads
			

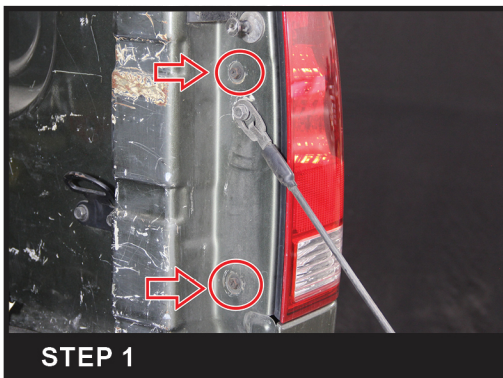
PRODUCT NUMBER

LT-TIT04RLED-G2-TM
LT-TIT04JMLED-G2-TM
LT-TIT04BKLED-G2-TM

LT-TIT04BBLED-G2-TM
LT-TIT04GLED-G2-TM
LT-TIT04JRLED-G2-TM



LET'S START THE INSTALLATION



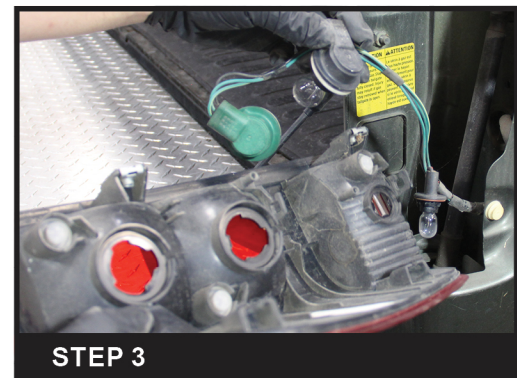
STEP 1

Remove the two 10mm bolts



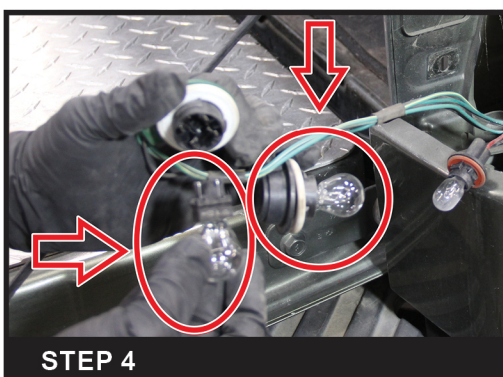
STEP 2

Unseat the factory tail light housing



STEP 3

Remove all three light bulb sockets and remove the factory tail light housing



STEP 4

Remove the brake light bulb and turn signal bulb from the light sockets



STEP 5

Use alcohol to clean the metal surface to apply the resistor



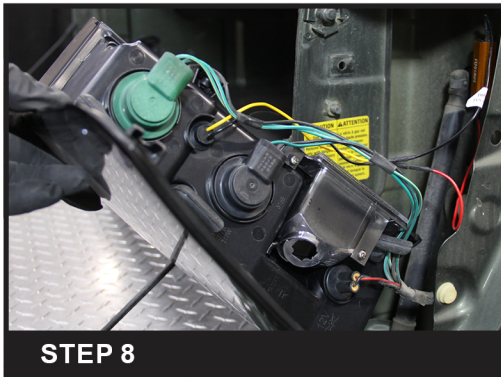
STEP 6

Set the new tail light resistor on the metal area



STEP 7

Insert the connectors from the new tail light housing to the light sockets, (+) to (+), and connect the resistor wire



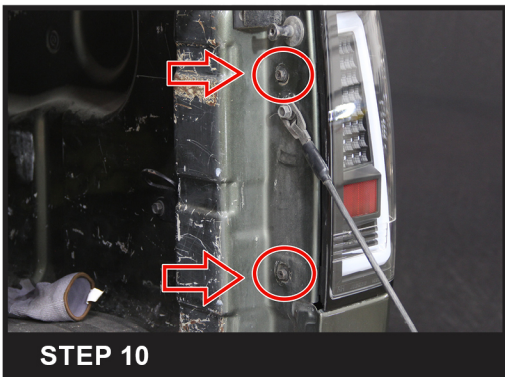
STEP 8

Install the light sockets to the new tail light housing



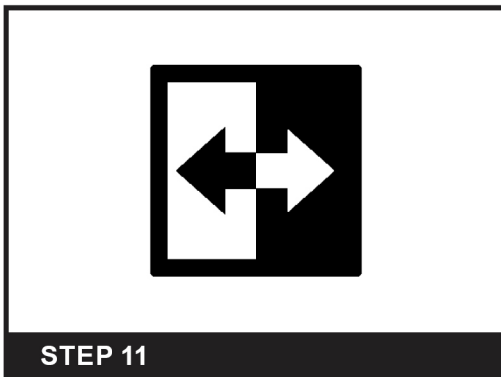
STEP 9

Seat the new tail light assembly in place



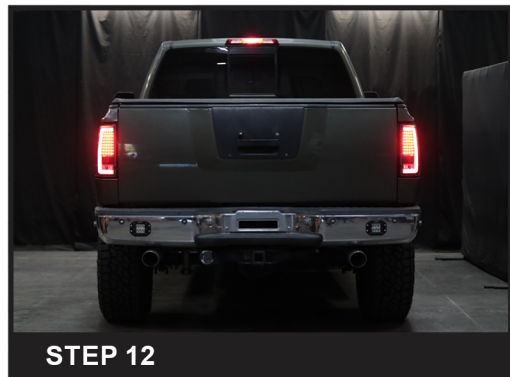
STEP 10

Reinstall the two 10mm bolts



STEP 11

Please repeat the steps from 1 to 10 for the opposite side



STEP 12

Close the tailgate to complete the installation



INSTALLATION & CARE

2004-2015 NISSAN TITAN LED TAIL LIGHT INSTALLATION INSTRUCTION

BEFORE INSTALLATION:

- If you experience any difficulties that the instructions did not cover, please seek assistance at a local automotive shop.
- Please wear proper protective equipment before you work on any vehicle.
- An assistant is recommended when removing the front bumper from your vehicle.
- Please be cautious when working with the bumper or any parts belonging to the vehicle's body to prevent scratching.
- Do not make direct contact with the halogen bulbs or the wire assembly until the unit has cooled down after use.

2004-2015 NISSAN TITAN LED TAIL LIGHT INSTALLATION INSTRUCTION

