

INSTALLATION & CARE

2015-2018 FORD FOCUS PROJECTOR HEADLIGHTS INSTALLATION INSTRUCTIONS

BEFORE INSTALLATION:

- If you experience any difficulties that the instructions did not cover, please seek assistance at a local automotive shop.
- Please wear proper protective equipment before you work on any vehicle.
- An assistant is recommended when removing the front bumper from your vehicle.
- Please be cautious when working with the bumper or any parts belonging to the vehicle's body to prevent scratching.
- Do not make direct contact with the halogen bulbs or the wire assembly until the unit has cooled down after use.

TOOLS AND SUPPLIES REQUIRED

3/8" Ratchet	ST20 Torx 3/8" Bit Socket		
			

PRODUCT NUMBER

2LHP-FOC15-SQ-TM
2LHP-FOC15JM-SQ-TM
2LHP-FOC15BK-SQ-TM
2LHP-FOC15G-SQ-TM



LET'S START THE INSTALLATION



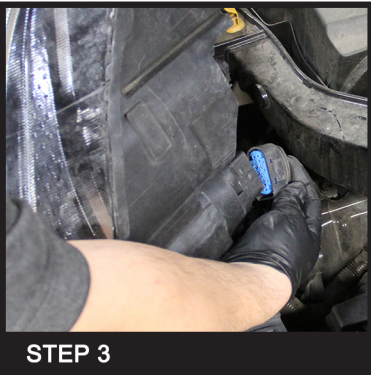
STEP 1

Remove the two T30 torx screws



STEP 2

Unseat the factory headlight housing



STEP 3

Disconnect the headlight harness and remove the factory headlight housing



STEP 4

Connect the new headlight harness



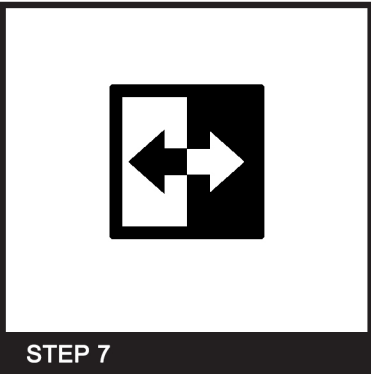
STEP 5

Seat the new headlight assembly in place



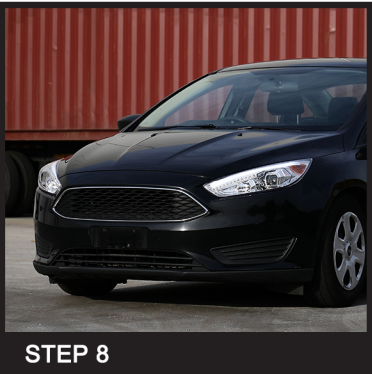
STEP 6

Reinstall the two T30 torx screws



STEP 7

Please repeat the steps from 1 to 6 for the opposite side



STEP 8

Close the hood to complete the installation

INSTALLATION & CARE

2015-2018 FORD FOCUS PROJECTOR HEADLIGHTS INSTALLATION INSTRUCTIONS

BEFORE INSTALLATION:

- If you experience any difficulties that the instructions did not cover, please seek assistance at a local automotive shop.
- Please wear proper protective equipment before you work on any vehicle.
- An assistant is recommended when removing the front bumper from your vehicle.
- Please be cautious when working with the bumper or any parts belonging to the vehicle's body to prevent scratching.
- Do not make direct contact with the halogen bulbs or the wire assembly until the unit has cooled down after use.

2015-2018 FORD FOCUS PROJECTOR HEADLIGHTS INSTALLATION INSTRUCTIONS



LOW BEAM ADJUSTER



HIGH BEAM ADJUSTER