

INSTALLATION INSTRUCTION
PART # BB3-RAM0615S2-WB
BULL BAR FOR 2006-2008 DODGE RAM 1500

PARTS LIST:

- (1) – BULL BAR
- (2) – BRACKETS (DRIVER/PASSENGER SIDE)
- (6) – 7/16 X 1 1/4 HEX HEAD BOLTS (M10X30MM)
- (6) – 7/16 HEX HEAD NUTS
- (6) – 7/16 LOCK WASHERS
- (12) – 7/16 FLAT WASHERS

PROCEDURE:

- 1 – REMOVE CONTENTS FROM BOX AND CHECK FOR DAMAGE. VERIFY ALL PARTS ARE PRESENT. READ INSTRUCTIONS CAREFULLY.
- 2 – REMOVE LOWER URETHANE VALANCE LOCATED UNDERNEATH FRONT BUMPER TEMPORARILY AND SET ASIDE.
- 3 – UNBOLT (2) EXISTING NUTS LOCATED ON OUTER SIDE OF FRAME RAIL (PASSENGER SIDE SHOWN) INSTALL LOWER BRACKET ONTO FRAME RAIL BOLTS *LEAVE LOOSE* (SEE FIG # 1)
- 4 – REPEAT PROCEDURE #3 ON OPPOSITE SIDE
- 5- INSTALL BULL BAR USING 6 – 7/16 X 1 1/4 HEX HEAD BOLTS, 6 – 7/16 HEX HEAD NUTS, 12 – 7/16 FLAT WASHERS , (6) – 7/16 LOCK WASHERS *LEAVE LOOSE* (SEE FIG # 1)
- 6 – LEVEL AND ADJUST BULL BAR AS DESIRED. TIGHTEN & TORQUE BOLTS
- 7 – MEASURE AND TRIM LOWER URETHANE VALANCE AS DESIRED. REINSTALL VALANCE ON TO FRONT BUMPER.

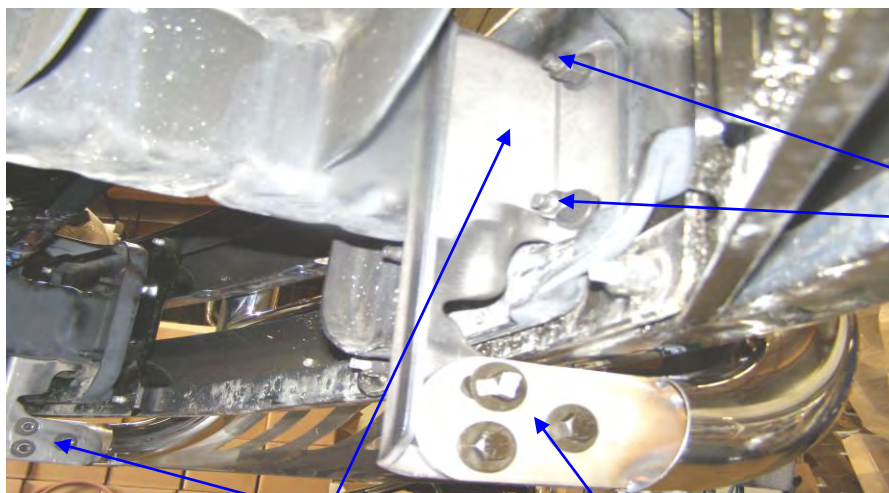


Fig #1

Existing Nuts

Passenger side show

7/16 Hardware