

# Installation & CARE

SPEC-D  
Tuning

INNOVATE

PERFECTIONAL

SERVICE

## 2006-2008 DODGE CHARGER LED TAIL LIGHTS INSTALLATION INSTRUCTION

### BEFORE INSTALLATION

- If you experience any difficulties that the instruction did not cover, please seek assistance at local automotive shop.
- Please wear protection before you work on any vehicle.
- An assistant is useful when removing the front bumper from your vehicle.
- Please be cautions when working with the bumper or any parts belonging to the vehicles's body to prevent scratching.
- Do not make direct contact with the halogen bulbs or the wire assembly until the unit has cooled down after use.

### TOOLS AND SUPPLIES REQUIRED


### PRODUCT NUMBER

LT-CHG05GLED-TM  
LT-CHG05RLED-TM  
LT-CHG05BBLED-TM

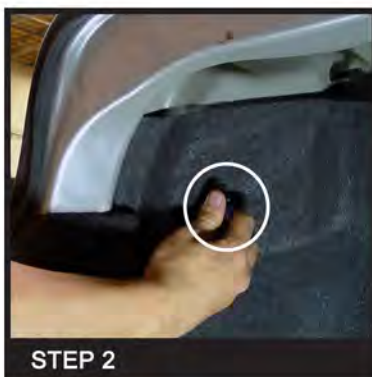


### LET'S START THE INSTALLATIONS



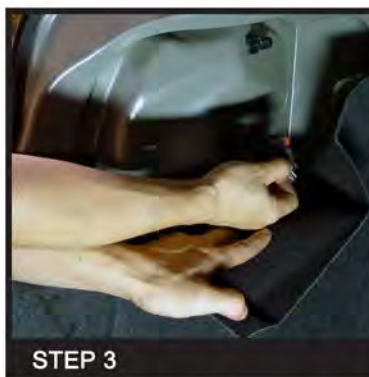
STEP 1

Open trunk



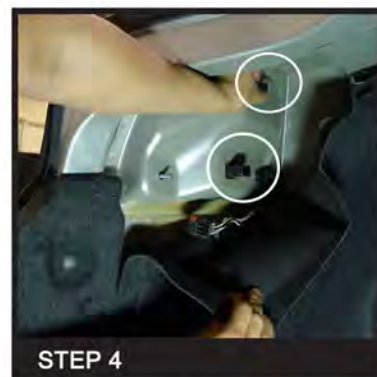
STEP 2

Undo one hand screw



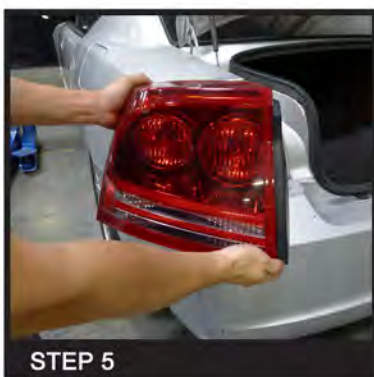
STEP 3

Move liner aside and disconnect  
harness connector



STEP 4

Remove two more hand screws



STEP 5

Remove tail light



STEP 6

Remove weatherstrip adhesive liner on  
LED tail light connector



STEP 7

Remove double sided tape liner on  
attached resistor



STEP 8

Attach resistor to an open location



#### STEP 9

Install tail light



#### STEP 10

Reinstall two hand screws



#### STEP 11

Reconnect tail light connector



#### STEP 12

Move back liner and reinstall one hand screw



#### STEP 13

Please repeat the steps from 1 to 12 for the opposite side



#### STEP 14

The installation is now complete