





Installation & CARE

2000-2006 BMW X5 LED TAILLIGHTS INSTALLATION

BEFORE INSTALLATION

- If you experience any difficulties that the instruction did not cover, please seek assistance at local automotive shop.
- Please wear protection before you work on any vehicle.
- An assistant is useful when removing the front bumper from your vehicle.
- Please be cautious when working with the bumper or any parts belonging to the vehicles's body to prevent scratching.
- Do not make direct contact with the halogen bulbs or the wire assembly until the unit has cooled down after use.

TOOLS AND SUPPLIES REQUIRED

1/4" Ratchet	Plastic pry bar	8 mm socket	Phillips Screwdriver
			

PRODUCT NUMBER

LT-X500CLED-TM
LT-X500RLED-TM
LT-X500GLED-TM

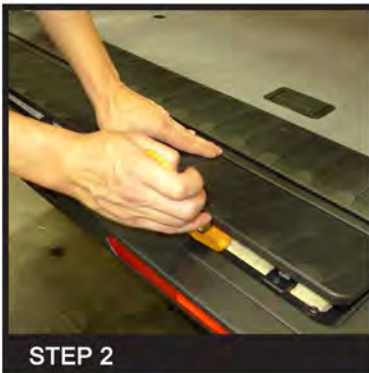


LET'S START THE INSTALLATIONS



STEP 1

Before installation



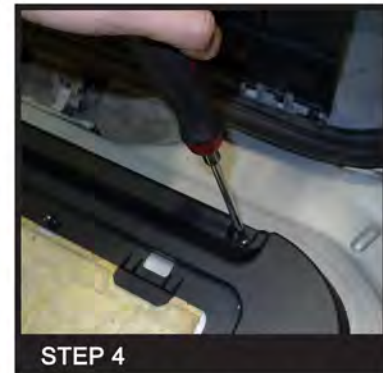
STEP 2

Remove the plastic panel covering the center of the inner tailgate



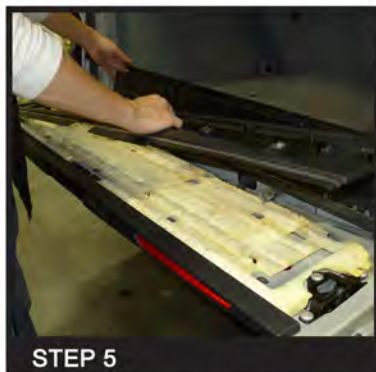
STEP 3

Move the trunk plastic piece



STEP 4

Remove the (12) phillips head screws to remove the plastic cover



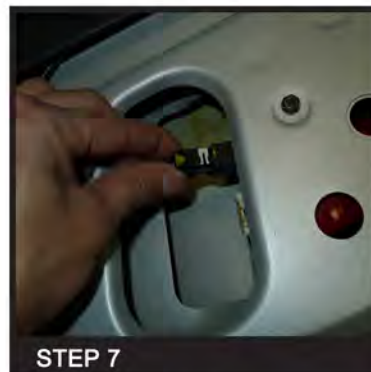
STEP 5

Remove the plastic panel



STEP 6

Remove the foam, locate and remove (3) 8mm bolts



STEP 7

Remove the connector



STEP 8

Remove the inner tail light



STEP 9

Install the LED tail light. Connect the taillight harness. Please see the "L.E.D. tail lights installation instruction" If your tail lights don't have L.E.D. You can skip the installation instruction.



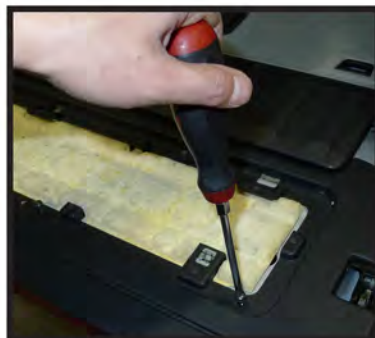
STEP 10

Connect the harness connectors



STEP 11

Reinstall (3) 8mm bolts to secure the tail light



STEP 12

Reinstall the foam and fasten (12) phillips head screws to secure the plastic cover



STEP 13

Fasten screws to secure the (12) plastic cover



STEP 14

Reinstall the plastic center panel cover



STEP 15

Peel back access panel



STEP 16

Remove (3) 8mm bolts for the corner tail lights



STEP 17

Remove the connector



STEP 18

Remove the tail light housing 2



STEP 19

Install the new corner tail light



STEP 20

Fasten (3) 8mm nuts



STEP 21

Secure the connector harness to the tail light harness



STEP 22

Replace the access panel



STEP 23

Please repeat the steps from 1 to 22 for the opposite side



STEP 24

The installation is now complete