

SPEC-D *Tuning*

1992-1998 BMW 3 SERIES COUPE TAILLIGHTS INSTALLATION INSTRUCTIONS

If you experience any difficulties that the instruction did not cover, Please seek assistance at a local automotive shop

Please wear protection before you work on any vehicle.



An assistant is useful when removing the front bumper from your vehicle.

Please be cautious when working with the bumper or any parts belonging to the vehicle's body to prevent scratching.

Do not make direct contact with the halogen bulbs or the wire assembly until the unit has cooled down after use.

TOOLS AND SUPPLIES REQUIRED

½" Drive Ratchet

8mm Socket

Product Part Numbers:

LT-E362RPW-DP



1992-1998 BMW 3 SERIES COUPE TAILLIGHTS INSTALLATION INSTRUCTIONS

If you experience any difficulties that the instruction did not cover, Please seek assistance at a local automotive shop

Please wear protection before you work on any vehicle.



An assistant is useful when removing the front bumper from your vehicle.

Please be cautions when working with the bumper or any parts belonging to the vehicles's body to prevent scratching.

Do not make direct contact with the halogen bulbs or the wire assembly until the unit has cooled down after use.



1. Turn the plastic knob



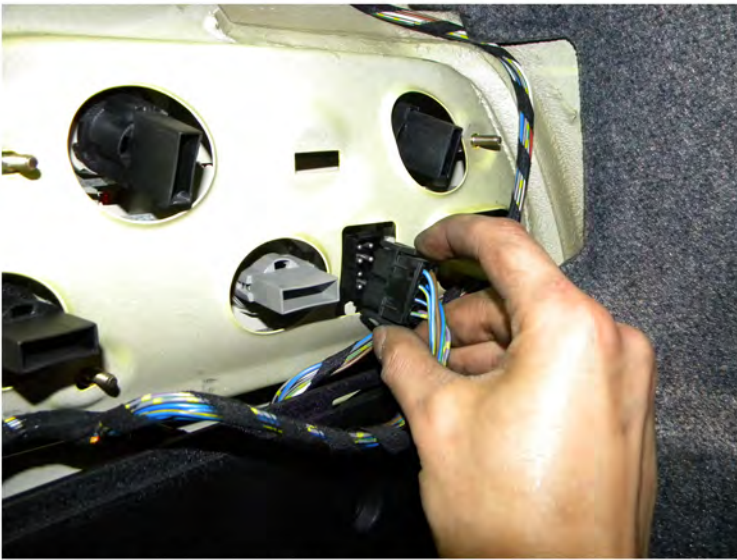
2. Remove the plastic cover



3. (4) 8mm nuts location



4. Remove the (4) 8mm nuts



5. Disconnect the taillight harness



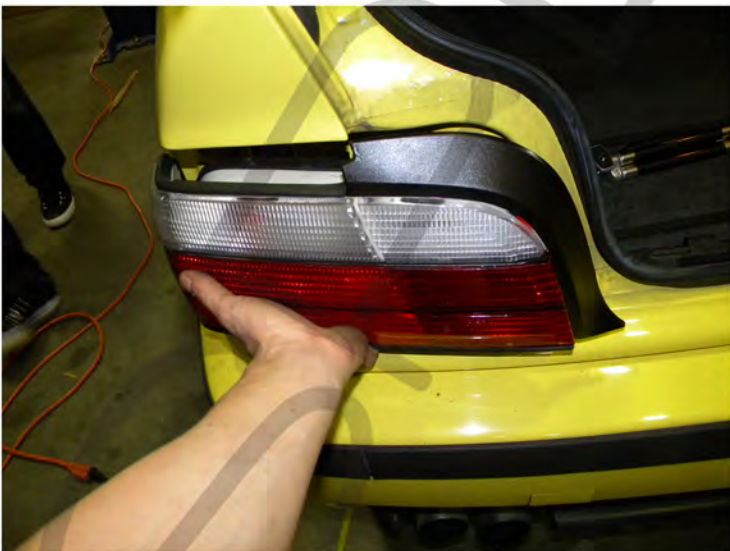
6. Remove the taillight



7. Remove the taillight sockets



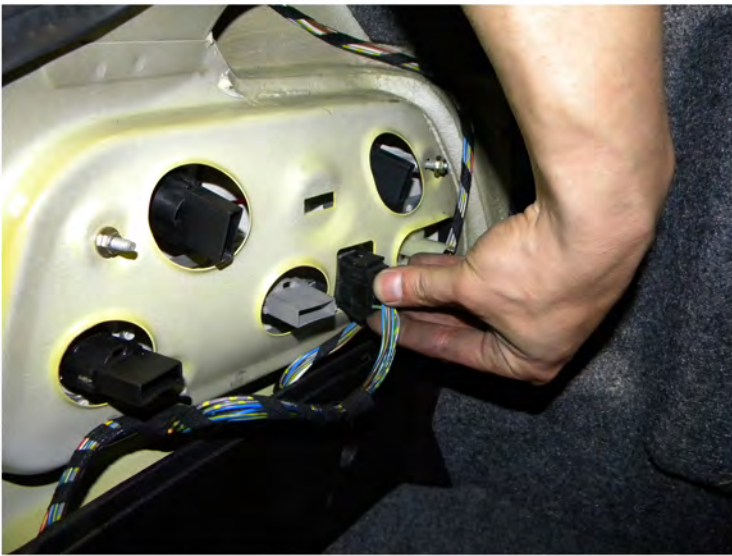
8. Place the taillight sockets in the new taillight



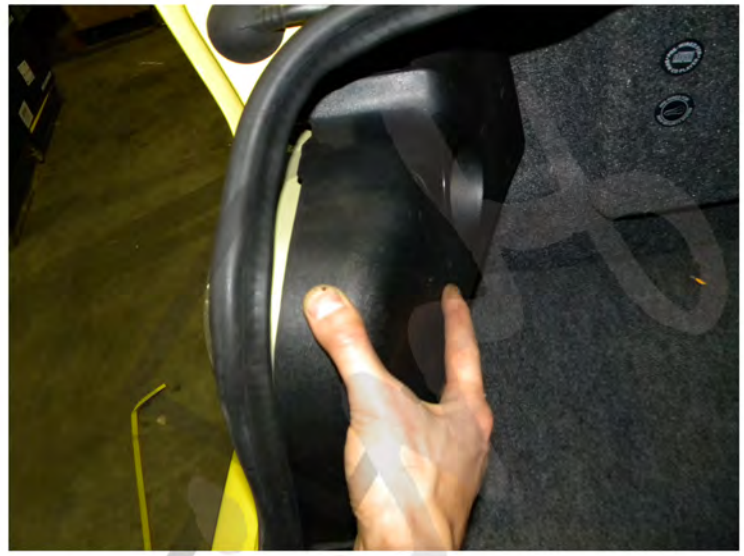
9. Place the new taillight in the stock location



10. Tighten the (4) 8mm nuts



11. Connect the taillight harness



12. Replace the plastic cover

Please repeat the steps in order from 1 to 12 for the opposite side



13. The installation is now complete

