

# SPEC-D *Tuning*

## 1992-1998 BMW E36 2DR 1PC PROJECTOR HEADLIGHTS INSTALLATION INSTRUCTIONS

If you experience any difficulties that the instruction did not cover, Please seek assistance at a local automotive shop

Please wear protection before you work on any vehicle.



An assistant is useful when removing the front bumper from your vehicle.

Please be cautious when working with the bumper or any parts belonging to the vehicle's body to prevent scratching.

Do not make direct contact with the halogen bulbs or the wire assembly until the unit has cooled down after use.

### TOOLS AND SUPPLIES REQUIRED

¼" Drive Ratchet

Trim Pad Remover

3" Extension

8mm Socket

Phillips Screwdriver

If your Headlight is Halo type, you also need:

If your Headlight is Halo type, you also need:

Wire Stripper

Wire Crimper

4 Blue Quick Splice Wire Connectors

4 Blue Male Quick Wire Connectors

4 Blue Female Quick Wire Connectors

2 Red Wires (8 inch)

2 Black Wires (8 inch)

### Product Part Numbers:

LHP-E3621PCJM-TM

LHP-E3621PC-TM



## 1992-1998 BMW E36 2DR 1PC PROJECTOR HEADLIGHTS INSTALLATION INSTRUCTIONS

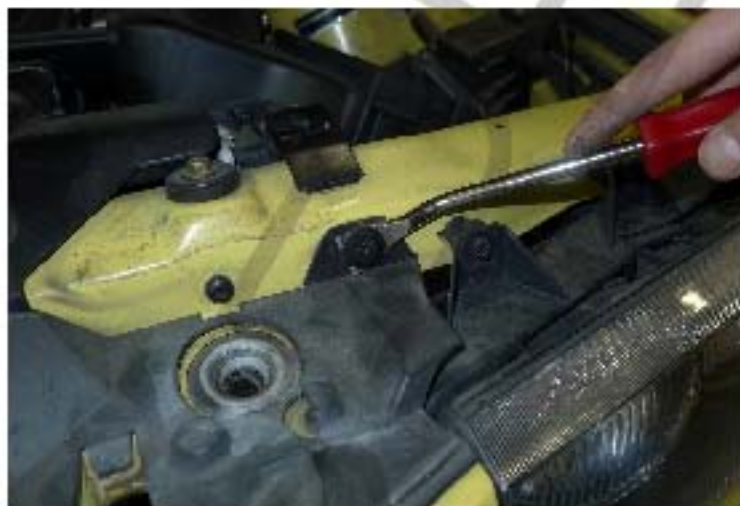
\*If you experience any difficulties that the instructions did not cover, Please seek assistance at local automotive shop.  
\*Please wear protection before you work on your vehicle.  
\*An assistant is useful when removing the front bumper from your vehicle.  
\*Please be cautious when working with the bumper or any parts belonging to the vehicles' body prevent scratching.  
\*Do not make direct contact with the halogen bulb or the wire assembly until the unit has cooled down after use.



1. (4) Phillips head screws location



2. Remove the (4) Phillips head screws



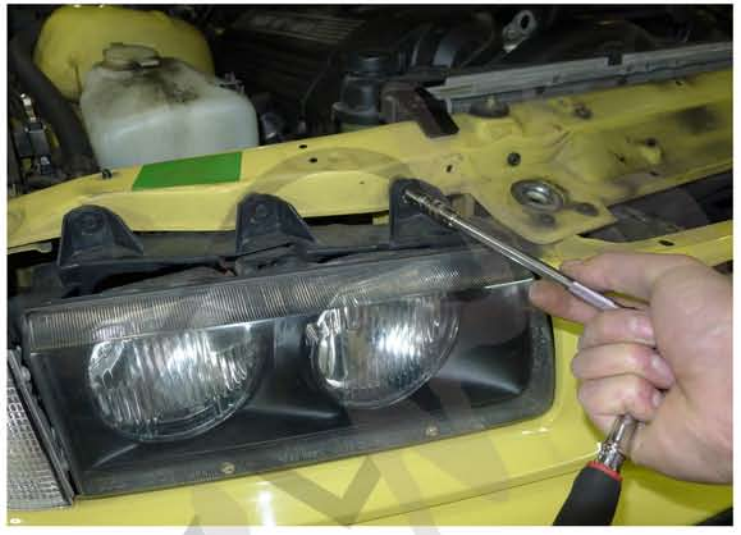
3. Remove the (2) plastic clips



4. Remove the plastic molding



5. (3) 8mm bolts location



6. Remove the (3) 8mm bolts



7. 8mm bolt location



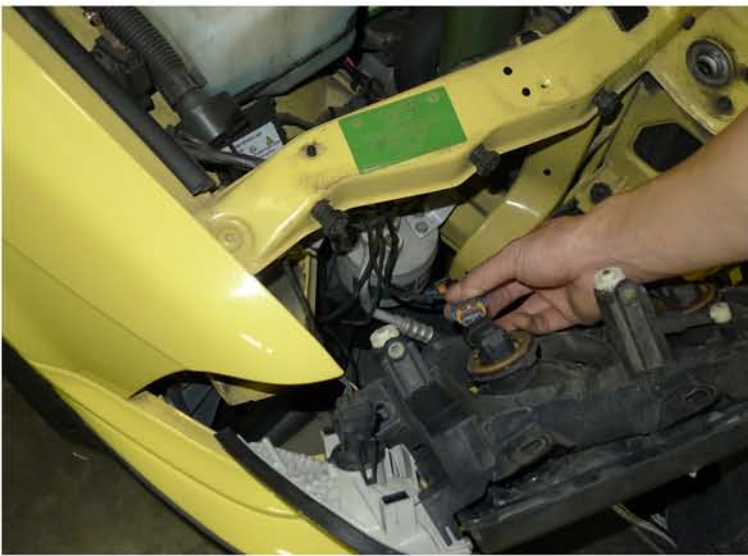
8. Remove the 8mm bolt



9. Remove the 8mm bolt



10. 11mm bolt location



11. Disconnect the headlight harness



12. Disconnect the corner light socket



13. Place the corner light socket in the new headlight



14. Connect the headlight harness to the new headlight  
Please see the Halo and L.E.D installation instructions  
If your headlights don't have HALO or L.E.D. You can skip it



15. Tighten the 8mm bolt



16. Tighten the 8mm bolt



17. Tighten the (3) 8mm bolts



18. Replace the plastic molding and tighten the (4) philips head screws



19. Tighten the (4) phillips head screws



20. Replace the (2) plastic clips



33. Please repeat the steps in order from 1 to 20 for the opposite side  
The installation now is complete